

101 Therapy Strategies to Increase Your Effectiveness as a Speech-Language Pathologist



LIVE ONLINE SEMINARS

March 10

9 AM Mountain, 11 AM Eastern,
10 AM Central, **8 AM Pacific**

March 11

9 AM Central, 10 AM Eastern,
8 AM Mountain, 7 AM Pacific

March 12

9 AM Eastern, 8 AM Central,
7 AM Mountain, 6 AM Pacific

ASHA CEUs Available at all Locations
CEUs and Graduate Credit Available
See page 6 for details

Live Online Seminar Presented by
MARGO KINZER COURTER, MA, CCC-SLP, BCS-CL
Speech Language Pathologist, Author and National Presenter

Specifically Designed for School-Based Speech-Language Pathologists Serving Pre-K Through Grade 12 Students

- ▶ **101 highly effective, practical treatment strategies** to add to your SLP toolbox – whether working with students in-person or online
- ▶ A wealth of **practical school-based therapy strategies that will boost academic success** across all curriculum areas
- ▶ Specific ways to **align your therapy outcomes and goals with state and classroom expectations**
- ▶ **Receive an extensive digital resource handbook** full of techniques, ideas and strategies that you can use immediately

“*One of the best seminars I have ever attended (and I’ve been an SLP for over 35 years!). Margo Kinzer Courter is phenomenal!*”

– BARBARA BROAD, SLP

ASHA CEUs AVAILABLE AT ALL LOCATIONS

Practical Ideas and Strategies

Are you looking for fresh, innovative, practical ways to better support your students with speech and language disorders? Are you looking for ideas to expand your repertoire of strategies when dealing with students struggling with morphology, phonology, semantics, syntax, grammar, and pragmatics? If you are looking for practical strategies and therapy techniques that will enhance your effectiveness, this is a seminar you won't want to miss. Experienced Speech-Language Pathologist, **MARGO KINZER COURTER**, will share 101 of the most effective therapy strategies and ideas that can be immediately implemented with students struggling with speech and language disorders – whether you are providing in-person or online therapy. She will also share insightful methods on how to ensure that your therapy is aligned with state expectations for language arts. This seminar will introduce you to some of the most highly effective treatment strategies that can positively impact students' receptive and expressive language skills. This seminar will provide 101 practical strategies that can be utilized in the classroom or in one-to-one therapy treatment to support acquisition of core speech and language skills.

At the end of the day, you will feel better equipped to work with students with speech and language disorders and will be armed with an overflowing toolbox of powerful therapy strategies you can put to use immediately – whether through face-to-face therapy or telepractice.

Ten Key Benefits of Attending

- 1. 101 Highly Effective Therapy Strategies to Support Evidence-Based Practice – Whether You Are Providing Face-To-Face or Online Therapy**
Add a plethora of new, easy-to-implement therapy strategies to boost your students' speech and language skills
- 2. Enrich Your Repertoire of Effective and Highly Engaging Speech and Language Intervention Strategies**
Discover numerous ready-to-use therapy materials, including apps and intervention strategies to promote speech and language skills as well as academic success
- 3. Implement Highly Effective Strategies for Classroom Success**
Increase students' ability for success in the classroom by implementing strategies that support speech and language during class, whole group work or independent work time
- 4. Expand Your Intervention Strategies to Support Students Who Struggle with Auditory and Reading Comprehension**
Add proven methods and therapy techniques to support students who struggle with understanding main ideas and supporting details in listening and reading
- 5. Gain Practical Strategies for Students Who Struggle with Word Finding/Retrieval**
Learn practical ways to increase word retrieval skills for letters, sounds, vocabulary, note taking, and test taking
- 6. Add New Therapy Techniques For Students Who Struggle with Reasoning Skills**
Gain useful strategies that can be used in the classroom to support students who require strategies for making predictions, inferences, and linking what they know to what they are learning
- 7. Uncover the Connection Between Social/Pragmatic Skills and Academic Success**
Learn additional techniques for targeting phonemic awareness to support early literacy success in the classroom
- 8. Discover a New Way to Target That Difficult /R/**
Learn strategies to remediate that late elementary, middle and high school /r/
- 9. Increase Strategies for Successful Collaboration Between SLPs, Classroom Teachers and Resource Teachers**
Focus on specific ways to build a collaborative relationship with classroom teachers and resource teachers ... Learn how to share practical techniques designed to target specific language processing skills that impact student learning
- 10. Receive an Extensive Language Therapy Digital Resource Handbook**
You'll leave with a detailed language therapy digital resource handbook packed with step-by-step activities, materials and resources designed to make your speech-language therapy program more efficient and effective whether you're working in-person or online

Outstanding Strategies You Can Use Immediately

What You Will Learn ...

- **Utilize innovative and easy-to-use language therapy ideas** – executive function, target morphology, phonology, syntax, semantics, and pragmatic language skills including narrative skills and word retrieval – for use in your therapy whether working face-to-face in teletherapy
- **Motivating ways to expand your vocabulary intervention to target basic concepts and curriculum-based vocabulary** – apply strategies to target vocabulary development and comprehension
- **Numerous inexpensive and effective therapy materials** – receive an extensive list of materials, apps and websites that can enhance your therapy
- **A variety of ready-made materials to target several language goals** – ideas on how to use materials to target morphology, phonology, syntax, and semantics
- **Increase your professional influence** – learn how to “market” yourself and your knowledge about language development through collaboration models
- **Extend the impact of your therapy program across the curriculum** – tie your language goals to specific subject areas to increase academic success for your students
- **Increase your participation as part of the RTI team** – learn strategies to lend your expertise to RTI initiatives
- **Merge current language lessons with reading, writing and spelling** – take the next step with your therapy goals to support necessary academic skills for language arts
- **Impact reading fluency and accuracy** – learn strategies for morphology, phonology, semantics, and retrieval to enhance your students’ reading fluency and accuracy
- **Expand your interventions for /R/ remediation** – assessing and targeting /R/ from a motor planning approach may finally lead to remediation
- **Discover new, easy-to-use language activities** – update your toolkit of language interventions to better merge language with literacy instruction
- **Utilize effective ways to become more interactive during therapy sessions** – proven ways to present information in ways that students will learn more and retain more

“Margo shared practical, ready-to-use strategies to implement right away. Her style of presentation kept my interest! She has true passion for the field.”

– DIANE L. TEAR, SLP



To Register,
Call Toll-Free

1-800-735-3503

A Message From Seminar Leader, Margo Kinzer Courter



Bureau of Education & Research

915 118th Avenue SE • PO Box 96068 • Bellevue, WA 98009-9668
Phone (800) 735-3503 • Fax (425) 453-1134 • www.ber.org

Dear Colleague:

I am sure you would agree that the key to success in school for students is their ability to read, speak and write effectively. The development of language and speech skills is vital in giving students a strong academic start in school and is necessary for success in later years as well. When students struggle because of a speech or language disorder, their success in school can be delayed or jeopardized. As speech-language pathologists, we can play a vital role in helping students with speech or language disorders and can help to ensure academic growth and success.

In my many years of working as an SLP, and specifically working with students who struggle with speech and language development issues, I have developed an extensive repertoire of time-friendly therapy techniques that I am excited to share with you. It is my goal to share these highly effective, yet practical speech and language development techniques to help you expand your own therapy and instructional options – whether you are providing in-person or online therapy. A few of the topics I will cover during our day together include:

- Proven ways to strengthen vocabulary, grammar, comprehension, and written language skills
- Powerful techniques to target morphology, phonology, syntax, semantics, and pragmatic language skills including narrative skills and word retrieval
- Ways to align your language strategies to state expectations for language arts
- Specific ways in which you can be a more effective and supportive member of an RTI team and/or collaborate more with the classroom teacher
- And much, much more

I am excited to share practical, timesaving ideas with you and to work with you to better serve students with speech or language disorders. My goal is to use our time together in the most efficient manner. Therefore, the seminar day will be fast-paced and focused on specific ways to increase and enhance your effectiveness as an SLP working with the school population, whether in a one-to-one situation or a whole classroom setting.

I promise, you will leave with an expanded toolkit of 101 ideas and a fresh perspective on how to better serve students who are struggling with a speech or language disorder.

Sincerely,

Margo Kinzer Courter, MBA, MA, CCC-SLP, BCS-SL

P.S. This seminar will be filled with a 101 quick and easy-to-implement ideas that you can put to use immediately in your own SLP practice – whether you are working in-person or online.

“As speech-language pathologists, we can play a vital role in helping students with speech or language disorders and can help to ensure academic growth and success.”

What Your Colleagues Say About Margo Kinzer Courter

*"I really appreciated all the resources, hands-on activities, examples and lists of apps. **Lot of good tools to take away and use in sessions and to discuss with my colleagues.**"*

– Luba Chesky, SLP

*"**Great resources and materials** shared and demonstrated! Margo is an awesome presenter!"*

– Gabriella Curry, SLP

*"Very organized. **Margo was very engaging.** Many helpful suggestions."*

– Michelle Natalino, SLP

*"Enthusiastic, **excellent strategies that I truly can use tomorrow.** Well worth the drive."*

– Dawn Watson, SLP

*"**I really enjoyed this seminar.** It was very well presented. I love that the slides had the pages listed in the book – so easy to follow. Thank you for all the great ideas."*

– Donna Jackson, SLP

*"Margo was pleasantly animated in her presentation. She used slides, videos and personal stories as **she presented her 101 therapy strategies that we could use with the speech/language disordered students on our caseload.**"*

– Carol Schellack, SLP

*"I was feeling really burnt out with my therapy strategies due to an extremely heavy caseload. **I gained multiple strategies in a short time that I will be implementing tomorrow.** Not only did Margo teach me strategies, but she also challenged me to think about all areas of speech and language."*

– Jenna Dress, SLP

*"**I will use many of the strategies in my everyday therapy sessions.***

I recommend Margo as a speaker – very dynamic!"

– Kristina Wahl, SLP

Uniquely Qualified Instructor

MARGO KINZER COURTER holds a master's degree in speech-language pathology as well as the certificate of clinical competency from the American Speech-Language and Hearing Association. Ms. Kinzer Courter has worked in a variety of settings during her 30 years of practice. She works with preschool children through high school with speech/language and learning challenges. Her therapy focuses on assisting the student with achieving academic success through direct service.

Margo has conducted a number of seminars for school-based Speech-Language Pathologists, parents and educators. She works with both students and their schools to facilitate success within the curriculum and strengthen students' language and learning abilities. This includes assisting teachers and resource support in adopting learning strategies that best meet students' needs. She is the author of *Here's How Children Learn Speech and Language: A Text on Different Learning Strategies* (Plural Publishing), *Collaborating Among Teachers and Speech-Language Pathologists* and *See It & Say It Visual Phonic Program* through Courter Communications. In addition, she is the author of *101 Therapy Strategies to Increase Your Effectiveness as a Speech-Language Pathologist*, the therapy strategy digital resource handbook you will receive at her seminar. Join Margo for this idea-packed seminar. You are sure to leave with numerous ideas to help you work with students with language disorders – whether you are providing in-person or online therapy.

About BER Live Online Seminars

With the current health challenges, all BER in-person PD events are currently being presented in a Live Online format:

Outstanding Instructors

All programs are led by outstanding BER national trainers

Extensive Resource Handbooks

You'll have access to an extensive digital Resource Handbook before, during and after your seminar

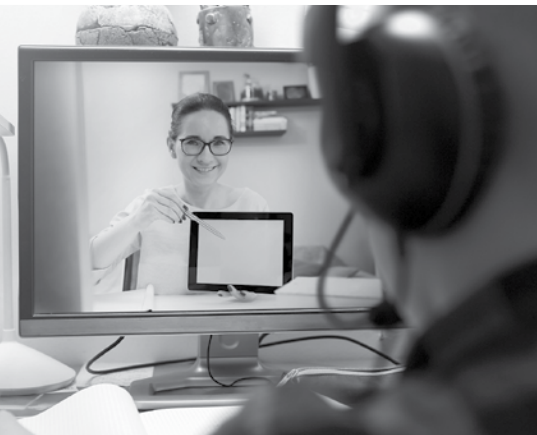
Highly Interactive

You'll be able to ask questions in real time and interact with the instructor and other participants

Program Guarantee

As we have for 43 years, we guarantee the high quality of our programs. If you are not satisfied, we'll give you a 100% refund.

Special Benefits of Attending



Who Should Attend

School-based speech-language pathologists serving Pre-K through Grade 12 students

“*Fantastic! I now have lesson plans for the rest of the year!*”

– JENNIFER HAMILTON,
SPEECH-LANGUAGE SPECIALIST

On-Site Training

Most BER seminars can be brought to your school or district in-person or online. See the options at www.ber.org/onsite or call 877-857-8964 to speak to one of our On-Site Training Consultants.

Extensive Digital Resource Handbook

Each participant will receive an extensive digital resource handbook giving you access to countless strategies before, during and after the seminar.

The handbook includes:

- Practical therapy strategies for all language areas – whether you are providing therapy in-person or through telepractice
- Information linking evidence-based practice to your state expectations and educational curriculum
- Visual graphic strategies to implement in the classroom
- Visual phonics program for phonemic awareness, sound-symbol knowledge, and phonological awareness
- A list of apps for easy reference

ASHA CEUs Available



The **Bureau of Education & Research** is approved by the Continuing Education Board of the American Speech-Language-Hearing Association (ASHA) to provide continuing education activities in speech-language pathology and audiology. **See course information for number of ASHA CEUs, instructional level and content area.** ASHA CE Provider approval does not imply endorsement of course content, specific products, or clinical procedures.

This course is offered for 0.50 ASHA CEUs (Intermediate level, Professional area).

ASHA-Required Disclosure Statement for Margo Kinzer Courter:

Financial: Consultant for the Bureau of Education & Research and receives honorarium compensation. She is the owner and has intellectual property rights within MK Courter Communications, LLC and receives financial benefit from book sales.

Nonfinancial: No nonfinancial relationships exist.

Please bring your ASHA Account Number to the seminar if you will be completing paperwork for the ASHA CE Registry.

Meet Inservice Requirements / Earn State CEUs

Participants of both the Live Online Seminar and those completing the Recorded Version online can receive a certificate of participation that may be used to verify five continuing education hours. In addition, state CEUs are available for both versions of the course. For details, visit www.ber.org/ceus

Earn One to Four Graduate Semester Credits



Up to four graduate level professional development credits are available with an additional fee and completion of follow-up practicum activities. Details for direct enrollment with Brandman University, part of the Chapman University system, will be available at this program.

Can't Attend?

Other Professional Development Options:



Related On-Demand Online Courses

Two related On Demand Video-Based Online Learning courses, *Timesaving Strategies to Integrate Your SLP Interventions into Classrooms: Moving from a Caseload to a Workload Approach*, for Grades P-12, and *SLPs: Enhance Therapy Effectiveness for Auditory Processing Disorder, Memory Deficits, Attention Deficit Disorder, and Language Processing*, are available for immediate registration. To enroll, visit www.ber.org/online

101 Therapy Strategies to Increase Your Effectiveness as a Speech-Language Pathologist

Registration (XYK1S1)

- 1. **March 10, 2021** (Start time: 9 AM Mountain)
- 2. **March 11, 2021** (Start time: 9 AM Central)
- 3. **March 12, 2021** (Start time: 9 AM Eastern)

FIRST NAME	M.I.	LAST NAME
<hr/>		
POSITION, SUBJECT TAUGHT	GRADE LEVEL	
<hr/>		
SEMINAR LOCATION NUMBER: _____ (Please see list above)		

List additional registrants on a copy of this form

SCHOOL NAME	
<hr/>	
SCHOOL MAILING ADDRESS	
<hr/>	
CITY & STATE	ZIP CODE
<hr/>	<hr/>
SCHOOL PHONE NUMBER	HOME PHONE NUMBER
()	()

Registration confirmations and login details are sent via e-mail

E-MAIL ADDRESS (REQUIRED FOR EACH REGISTRANT)	
<hr/>	
HOME MAILING ADDRESS	
<hr/>	
CITY & STATE	ZIP CODE
<hr/>	<hr/>





IMPORTANT – PRIORITY ID CODE: EXYK1S1

METHOD OF PAYMENT – Team Discount Available

The registration fee is \$279 per person, for teams of three or more registering at the same time, the fee is \$259 per person. **Payment is due prior to the program.** No cash please.

- A check (payable to **Bureau of Education & Research**) is attached
 - A purchase order is attached, P.O. # _____ (Be sure to include priority ID code on the P.O.)
 - Charge my: MasterCard VISA Discover
- Account # _____ Exp. Date: _____ MO/YR
- Billing Zip Code: _____ 3 Digit CVV Code: _____ (Found on back of card)
- _____/_____/_____
Please print name as it appears on card Signature (required for credit card purchases)

FOUR EASY WAYS TO REGISTER:

-  REGISTER ONLINE at: **www.ber.org**
-  FAX this form to: **1-425-453-1134**
-  PHONE toll-free: **1-800-735-3503** (Weekdays 5:30 am - 4 pm Pacific Time)
-  MAIL this form to: **Bureau of Education & Research**
915 118th Avenue SE • PO Box 96068
Bellevue, WA 98009-9668

PRE-REGISTRATION REQUIRED DUE TO LIMITED ENROLLMENT

Program Hours

- All Live Online seminars start times are described on the cover
- Check-in 15 minutes prior to the seminar
- Live Online seminars are five hours in length plus breaks
- Registrants will receive login information by email four days before their Live Online seminar

Fee

The registration fee is \$279 per person, \$259 per person for groups of three or more registering at the same time. Call us at 1-800-735-3503 for groups of ten or more. **Payment is due prior to the program.** Fee includes seminar registration, a certificate of participation and an extensive digital resource handbook.

Cancellations/Substitutions

100% of your paid registration fee will be refunded if you can't attend and notify us at least 10 days before the conference. Late cancellations made prior to the event date will be refunded less a \$15 service fee. Substitutions may be made at any time without charge.

Further Questions

Call the Bureau of Education & Research (800) 735-3503 or visit us online at **www.ber.org**. The Bureau is North America's leading presenter of PD training for professional educators. Programs are based on sound research, are highly practical in content and consistently receive excellent evaluations.

Program Guarantee

We stand behind the high quality of our programs by providing the following unconditional guarantee: If you are not satisfied with this program, we'll give you a 100% refund of your registration fee.



BUREAU OF EDUCATION & RESEARCH

915 118th Avenue SE
PO Box 96068
Bellevue, WA 98009-9668
www.ber.org

Prsrt Std
U.S. Postage
PAID
Bureau of
Education &
Research

101 Therapy Strategies to Increase Your Effectiveness as a SPEECH-LANGUAGE PATHOLOGIST

Practical PD, No Travel

- An outstanding one-day Live Online Seminar
- Includes an extensive Resource Handbook
- Enhance Your Practice as a School-Based Speech-Language Pathologist

XYK1S1

101 Therapy Strategies to Increase Your Effectiveness as a SLP



A Unique One-Day Live Online Seminar

101 highly effective, practical treatment strategies to add to your SLP toolbox – whether working with students in-person or online

A wealth of **practical school-based therapy strategies that will boost academic success** across all curriculum areas

Specific ways to **align your therapy outcomes and goals with state and classroom expectations**



BUREAU OF EDUCATION & RESEARCH