

Childhood Apraxia of Speech: Practical Treatment Strategies for More Intelligible Speech



LIVE ONLINE SEMINARS

December 14

9 AM Eastern, 8 AM Central,
7 AM Mountain, 6 AM Pacific

December 15

9 AM Central, 10 AM Eastern,
8 AM Mountain, 7 AM Pacific

December 16

9 AM Mountain, 11 AM Eastern,
10 AM Central, 8 AM Pacific

December 17

9 AM Pacific, 12 PM Eastern,
11 AM Central, 10 AM Mountain

CEUs and Graduate Credit Available

See page 6 for details

“*This seminar is full of practical, valuable information. I'm excited to incorporate it into my therapy with students! Thanks Margo!*”

— JENNIFER WIMBERLEY, SLP PK-8TH GRADE

One-Day Live Online Seminar Presented by
MARGO KINZER COURTER, CCC-SLP
Speech-Language Pathologist, Author and National Presenter

Specifically Designed for Speech-Language Pathologists Serving Children from Birth through Sixth Grade with Childhood Apraxia of Speech

- **Discover a multitude of practical intervention techniques** to use with students with Childhood Apraxia of Speech (CAS) in the classroom, through teletherapy, and in their everyday environment
- **Increase functional communication** for students with CAS through **innovative and highly-effective strategies** from birth to grade 6
- Participate in **review of case studies for making differential diagnosis**
- **Receive an extensive digital Childhood Apraxia of Speech resource handbook** full of techniques, ideas and strategies that you can use immediately

Practical Strategies

Childhood Apraxia of Speech (CAS) is a complex speech disorder that requires assessment and therapy techniques not needed for other speech disorders. By knowing what to assess and specific procedures for treatment, your students will produce more intelligible speech quicker.

MARGO KINZER COURTER, a highly experienced Speech-Language Pathologist, has specifically designed this live online seminar for SLPs who work with children from preschool through sixth grade.

Participants will gain a better understanding of the signs and symptoms of CAS in very young children as well as school-age students. Participants will have opportunities to learn multicueing strategies, share ideas with their peers, become familiar with assessment protocols, and practice treatment strategies. Most critically, those who attend can feel confident that they are getting the latest, most up-to-date, research-based information on the disorder as outlined by the American Speech-Language-Hearing Association (ASHA).

This one day seminar will help you understand CAS as a motor planning disorder. It will provide you with the necessary tools to diagnose and treat this motor speech and can be used in everyday treatment sessions with children with CAS – whether providing in-person or online therapy.



Ten Key Benefits of Attending

- 1. Differentiate Between CAS and Other Speech Disorders**
Recognize the characteristics of CAS ... Understand what the differences are between CAS, articulation, a severe phonological disorder, and dysarthria
- 2. Learn Practical Therapy Techniques for Children with CAS – Whether Providing In-Person or Teletherapy**
Learn effective treatment approaches such as Dynamic Temporal and Tactile Cueing (DTTC), and Progressive Approximation, as well as other effective treatment techniques including visual, tactile and kinesthetic cues developed by Margo Kinzer Courter
- 3. Discover the Most Effective Assessment for CAS**
Based on ASHA (2007) position statement, learn what areas should be assessed and what assessment tools are available for differentiating CAS from other speech disorders. Margo will provide you with an assessment document that includes all areas that should be assessed.
- 4. Improve Your Ability to Determine Appropriate Services for Children with CAS**
Students with CAS may demonstrate a concomitant language disorder ... Learn how CAS may impact your students' learning ... Learn how you can use your multisensory cues in therapy to support literacy development
- 5. Expand Your Understanding of the Principles of Motor Learning**
Understand what the principles of motor learning are and why they are important in making treatment decisions for children with CAS to more quickly increase motor planning and thus intelligibility of your students
- 6. Review Case Studies to Assist in a Differential Diagnosis**
Through discussing case studies with your colleagues, gain a better understanding of how to diagnose CAS
- 7. Discover Creative Avenues to Increase the Intensity of Your Intervention**
Research suggests that intensive intervention is needed for success when working with students with CAS ... Explore avenues to increase this intensity without overburdening your caseload
- 8. Maximize Your Students' Time During Treatment**
Learn how to target the correct motor sequence for your students for greater success ... Therapy ideas to save you valuable time
- 9. Discover What Resources are Available for CAS**
Explore the resources available for professionals and parents to increase understanding and keep abreast of the most current information regarding CAS
- 10. Receive an Extensive Digital CAS Resource Handbook to Expand Your Therapy Tool Kit**
Receive a detailed digital CAS resource handbook that includes resources, references and instructions on how to utilize these powerful assessments and therapy techniques – whether you are providing in-person or online therapy

Outstanding Strategies You Can Use Immediately

- Learn **specific techniques and therapy protocols** for CAS – whether you are providing in-person or online therapy
- How to **recognize the characteristics of CAS**
- Specific ways to **identify the differences between CAS, phonological and articulation disorders, and dysarthria** and how to more effectively help your students improve their speech production
- How to **assess for CAS**
- How to **interpret assessment results** and directly apply them to treatment plans
- Learn **comorbid diagnoses** that may accompany CAS
- Identify **language domains that may be impacted** by CAS
- Discover **evidence-based practices** for working with students with CAS
- Learn strategies to move **from practice to generalization**
- Practical, **usable therapy techniques** to improve the intelligibility of speech for children with CAS
- Learn **multimodality cues** designed by Margo Kinzer Courter
- Learn a **visual cueing system that leads to literacy development**
- Understand **the principles of motor learning** and why they are important in making treatment decisions for students with CAS
- **A multitude of resources, materials and demonstrations** you can use immediately with your own students in multiple therapy models including push-in, pull-out and teletherapy
- Research-based **treatment methods from a leading therapist** on how to work successfully with students with CAS

“ *This is very helpful! It really helps me understand how to differentiate therapy with my students.* ”

– ASHLEY CARLSON, SLP



**To Register,
Call Toll-Free**

1-800-735-3503

A Message From Seminar Leader, Margo Kinzer Courter



“By understanding the characteristics of CAS, knowing what to assess, and how to treat it, your students will make remarkable progress.”



Bureau of Education & Research

915 118th Avenue SE • PO Box 96068 • Bellevue, WA 98009-9668
Phone (800) 735-3503 • Fax (425) 453-1134 • www.ber.org

Dear Colleague:

I have developed this seminar specifically for Speech-Language Pathologists who work with children and have questions about how to assess and treat Childhood Apraxia of Speech (CAS). There is much to learn about this disorder, and there are specific diagnoses and treatment strategies that have been successful. We will spend our day together discussing and demonstrating these highly effective, practical techniques that you can use in your therapy whether you are working with students in-person or online.

During my practice, I have had the honor of treating many preschool children. These children were typically late talkers. I would spend several sessions (or months) treating the language disorder to realize that the child's sound system was not improving with my therapy techniques. At that point, I would suspect that the child might have difficulty with motor planning for speech, thus, Childhood Apraxia of Speech. I would then change my therapy strategy to address the speech disorder in addition to the language disorder. As new children began therapy, I made a change to my therapy techniques and initiated strategies appropriate for CAS. The results were astounding!

Regardless of the age that you are treating, CAS requires specific treatment strategies that are unique to this population. It is so important to know the course that this disorder might follow from a late talker to what appears to be stubborn articulation errors of a fourth or fifth grader. CAS can impact academic success from difficulty with morphology, phonological awareness, perceptual skills, syntax, and grammar. By understanding the characteristics of CAS, knowing what to assess, and how to treat it, your students will make remarkable progress.

Please join me for this day of sharing our experiences and learning about this fascinating disorder. I've packed this seminar with practical therapy techniques designed specifically for treating CAS and am excited to share my experience and evidence-based methods with you. I want you to leave with the understanding of how to diagnose, determine an appropriate level of service and subsequently treat children with this disorder.

Sincerely,

Margo Kinzer Courter, MA, CCC-SLP

P.S. This seminar will focus on practical ways SLPs can assess and treat CAS. It will provide practical strategies that you can use the very next day – whether you are providing in-person or online therapy.

What Your Colleagues Say About Margo Kinzer Courter

*"Margo is a lively, **engaging presenter with a wealth of knowledge** – she is a dynamo and must be an incredibly gifted SLP."* – Marcy Comas, SLP

*"**Awesome strategies** to use with preschoolers!"* – Rita Fitch, SLP

*"The knowledge that I gained today is wonderful and **I can't wait to get home to really absorb what Margo presented today, thank you!**"*
– Jennifer Moghaddar, SLP

*"Wonderful, applicable **information I can put into practice immediately.** Thank you!"* – Kristina Hammond

*"Very knowledgeable instructor. **Many resources provided,** along with great explanations and examples."* – Jeff Gibson, SLP

*"Great seminar! **Lots of valuable material.**"* – Jackie Potts, SLP

*"Very informative! **Great practical ideas and strategies.**"* – Maria Reeves, SLP

*"**Excellent presenter and resource handbook.** Very organized presentation, nice pacing and many practical therapeutic applications."* – Rita Weissman, SLP

*"**Fantastic explanations and examples** – both visual videos as well as concrete therapeutic approaches."* – Shannon Praveto, SLP

About BER Live Online Seminars

With the current health challenges, all BER in-person PD events are currently being presented in a Live Online format:

Outstanding Instructors

All programs are led by outstanding BER national trainers

Extensive Resource Handbooks

You'll have access to an extensive digital Resource Handbook before, during and after your seminar

Highly Interactive

You'll be able to ask questions in real time and interact with the instructor and other participants

Program Guarantee

As we have for 43 years, we guarantee the high quality of our programs. If you are not satisfied, we'll give you a 100% refund.

Uniquely Qualified Instructor

MARGO KINZER COURTER

holds a master's degree in Speech Language Pathology as well as a certificate of clinical competency from the American Speech Language and Hearing Association (ASHA) and is Board Certified Specialist in Child Language. Margo has worked in a variety of pediatric settings during her more than 30 years of practice. She has extensive experience in CAS from infancy through high school. Targeting speech and language skills as well as the potential academic impact of the disorder is always foremost for her. She is the author of *Here's How Children Learn Speech and Language: A Text on Different Learning Strategies* (Plural Publishing), *Collaboration Among Teachers and Speech-Language Pathologists* and *See It & Say It Visual Phonics*. She is also the author of *SLPs: Practical Treatment Strategies for CHILDHOOD APRAXIA of SPEECH*, the extensive digital resource handbook each participant will receive at the seminar.



Special Benefits of Attending



Who Should Attend

Speech-Language Pathologists serving children from birth through sixth grade with Childhood Apraxia of Speech (CAS)

Online Learning

BER offers educators a wide range of online courses that are affordable, fun, fast, and convenient. BER is now offering On Demand Video-Based courses. You may earn optional graduate-level credits for most courses. See the catalog of available courses at www.ber.org/online

On-Site Training

Most BER seminars can be brought to your school or district in-person or online. See the options at www.ber.org/onsite or call 877-857-8964 to speak to one of our On-Site Training Consultants.

Extensive Digital CAS Resource Handbook

Each participant will receive an extensive digital resource handbook specifically designed for this seminar. The handbook includes:

- How to diagnose CAS
- Assessments to assist in determining if CAS is present
- Information about comorbid disorders
- Easy-to-implement treatment strategies for preschool through middle school – whether providing in-person or online therapy
- Practical strategies that will assist students with academic learning

Consultation Available

Margo Kinzer Courter will be available at the seminar for consultation regarding your questions and the unique needs of your own program.

ASHA CEUs Available



The **Bureau of Education & Research** is approved by the Continuing Education Board of the American Speech-Language-Hearing Association (ASHA) to provide continuing education activities in speech-language pathology and audiology. **See course information for number of ASHA CEUs, instructional level and content area.** ASHA CE Provider approval does not imply endorsement of course content, specific products, or clinical procedures.

This course is offered for 0.50 ASHA CEUs (Intermediate level, Professional area).

ASHA required disclosure for Margo Kinzer Courter:

Financial: Consultant for the Bureau of Education and Research and receives honorarium compensation.

Author for Plural Publishing and MKC Publications and receives royalty payments.

Nonfinancial: No relevant nonfinancial relationships to disclose.

Please bring your ASHA Account Number to the seminar if you will be completing paperwork for the ASHA CE Registry.

Earn One to Four Graduate Semester Credits



Up to four graduate level professional development credits are available with an additional fee and completion of follow-up practicum activities. Details for direct enrollment with Brandman University, part of the Chapman University system, will be available at this program.

Meet Inservice Requirements

At the end of the program, each attendee will receive a certificate of participation that may be used to verify hours of participation in meeting continuing education requirements.

Can't Attend?

Other Professional Development Options:

Related On-Demand Online Courses

Two related On Demand Video-Based Online Learning courses, *SLP: Promoting Rapid Change for Children with Severe Phonological Disorders*, for Grades PreK-6, and *SLPs: Enhance Therapy Effectiveness for Auditory Processing Disorder, Memory Deficits, Attention Deficit Disorder, and Language Processing*, are available for immediate registration. To enroll, visit www.ber.org/online

Childhood Apraxia of Speech: Practical Treatment Strategies for More Intelligible Speech

Registration (XY71F1)

- 1. **December 14, 2020** (Start time: 9 AM Eastern)
- 2. **December 15, 2020** (Start time: 9 AM Central)
- 3. **December 16, 2020** (Start time: 9 AM Mountain)
- 4. **December 17, 2020** (Start time: 9 AM Pacific)

FIRST NAME	M.I.	LAST NAME

POSITION, SUBJECT TAUGHT	GRADE LEVEL	

SEMINAR LOCATION NUMBER: _____ (Please see list above)		

List additional registrants on a copy of this form

SCHOOL NAME	

SCHOOL MAILING ADDRESS	

CITY & STATE	ZIP CODE
_____	_____
SCHOOL PHONE NUMBER	HOME PHONE NUMBER
()	()

Registration confirmations and login details are sent via e-mail

E-MAIL ADDRESS (REQUIRED FOR EACH REGISTRANT)	

HOME MAILING ADDRESS	

CITY & STATE	ZIP CODE
_____	_____

IMPORTANT: PRIORITY ID CODE EXY71F1


METHOD OF PAYMENT – Team Discount Available


The registration fee is \$279 per person, for teams of three or more registering at the same time, the fee is \$259 per person. **Payment is due prior to the program.** No cash please.


- A check (payable to **Bureau of Education & Research**) is attached
 - A purchase order is attached, P.O. # _____
(Be sure to include priority ID code on the P.O.)
 - Charge my: MasterCard VISA Discover
- Account # _____ Exp. Date: _____ MO/YR
- Billing Zip Code: _____ 3 Digit CVV Code: _____
(Found on back of card)
- /
- Please print name as it appears on card Signature (required for credit card purchases)

FOUR EASY WAYS TO REGISTER:

 REGISTER ONLINE at: www.ber.org

 FAX this form to: 1-425-453-1134

 PHONE toll-free: 1-800-735-3503 (Weekdays 5:30 am - 4 pm Pacific Time)

 MAIL this form to: **Bureau of Education & Research**
915 118th Avenue SE • PO Box 96068
Bellevue, WA 98009-9668

PRE-REGISTRATION REQUIRED DUE TO LIMITED ENROLLMENT

Program Hours

- All Live Online seminars start times are described on the cover
- Check-in 15 minutes prior to the seminar
- Live Online seminars are five hours in length plus breaks
- Registrants will receive login information by email four days before their Live Online seminar

Fee

The registration fee is \$279 per person, \$259 per person for groups of three or more registering at the same time. Call us at 1-800-735-3503 for groups of ten or more. **Payment is due prior to the program.** Fee includes seminar registration, a certificate of participation and an extensive digital resource handbook.

Cancellations/Substitutions

100% of your paid registration fee will be refunded if you can't attend and notify us at least 10 days before the conference. Late cancellations made prior to the event date will be refunded less a \$15 service fee. Substitutions may be made at any time without charge.

Further Questions

Call the Bureau of Education & Research (800) 735-3503 or visit us online at www.ber.org. The Bureau is North America's leading presenter of PD training for professional educators. Programs are based on sound research, are highly practical in content and consistently receive excellent evaluations.

Program Guarantee

We stand behind the high quality of our programs by providing the following unconditional guarantee: If you are not satisfied with this program, we'll give you a 100% refund of your registration fee.



BUREAU OF EDUCATION & RESEARCH

915 118th Avenue SE
PO Box 96068
Bellevue, WA 98009-9668
www.ber.org

Prsrtd Std
U.S. Postage
PAID
Bureau of
Education &
Research

SLPs:
Practical Treatment Strategies for
CHILDHOOD APRAXIA OF SPEECH
Practical PD, No Travel

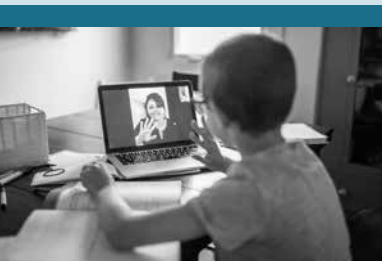
An outstanding one-day Live Online Seminar

Includes an extensive Resource Handbook

Highly Practical Strategies

XY71F1

Childhood Apraxia of Speech: Practical Treatment Strategies for More Intelligible Speech



A Unique One-Day Live Online Seminar

Specifically Designed for Speech-Language Pathologists Serving Children from Birth through Sixth Grade with Childhood Apraxia of Speech

Discover a multitude of practical intervention techniques to use with students with Childhood Apraxia of Speech (CAS)

Increase functional communication for students with CAS through **innovative and highly-effective strategies** from birth to grade 6

Participate in **review of case studies for making differential diagnosis**

Receive an extensive digital Childhood Apraxia of Speech resource handbook full of techniques, ideas and strategies that you can use immediately



BUREAU OF EDUCATION & RESEARCH