

Speech-Language Pathologists: Strategies to Support Students with Reading and Language Deficits (Grades PreK-12)



A Unique One-Day Live Online Seminar Presented by
MariBeth Plankers, M.S. CCC-SLP, ATP
Outstanding Speech-Language Pathologist
and National Presenter

**Specifically Designed for School-Based Speech-Language
Pathologists Working with Students in Grades PreK-12**

Learn evidence-based strategies that work in-person and online to support reading, language and written skills for students with significant language-literacy disorders, dyslexia and language deficits

Gain insight into **accessible education materials** that will support your students across settings and situations, whether in the classroom or online, for reading, vocabulary and written language needs

Explore how intervention can be planned to **incorporate literacy strategies into special and general education settings**

Help students on your caseload/workload develop a positive growth mindset to increase their confidence and success with reading and writing

Live Online Seminars

February 9

9 AM Eastern, 8 AM Central,
7 AM Mountain, 6 AM Pacific

February 10

9 AM Central, 10 AM Eastern,
8 AM Mountain, 7 AM Pacific

February 11

9 AM Pacific, 12 PM Eastern,
11 AM Central, 10 AM Mountain

CAN'T ATTEND?

Order the recorded version and take the seminar online at your convenience (see page 6)

ASHA CEUs Available at All Locations

CEUs and Graduate Credit Available
See page 6 for details

Ten Key Benefits of Attending

'This is the best seminar for speech-language pathologists that I've attended in years. MariBeth is a wealth of knowledge.'

– MARY, SPEECH-LANGUAGE PATHOLOGIST



Who Should Attend

School-Based
Speech-Language
Pathologists and Assistive
Technology Professionals
working with students
in Grades PreK-12

1. **What Every SLP Should Know About Reading Deficits and How They Relate to Students Whether They Are Learning In-Person or Online**

Learn the different types of language-based reading challenges you will see in students with significant language-literacy disorders, dyslexia (specific reading disorder), receptive and expressive language disorders, and autism spectrum disorders

2. **Expand Your School-Based or Online Learning Role as an SLP in Teaching Decoding and Spelling**

Utilize techniques such as morphology and word investigation to help children develop detailed lexical representations that include information about the word meanings, grammatical uses, spelling, and pronunciation within your current vocabulary lessons

3. **Learn the Impact of Oral Language and Written Language on Students' Reading Skills**

Gain practical information about language, reading and writing assessments and the different types of language skills that each assessment evaluates

4. **Determine the Best Methods for Assessment**

Address your language, reading comprehension and written language assessments to best uncover a child's unique language-literacy challenges whether you are working online or in a classroom

5. **Establish Yourself as a Key Team Member for Students with Reading Disorders**

Bring your unique expertise in language, literacy, phonology, and pragmatics (social interactions) to the table or virtual meeting in your consultations with classroom teachers and reading specialists

6. **Expand Your Toolkit of Therapy Ideas Both Inside and Outside the Classroom Setting**

Learn practical, engaging and effective techniques to systematically help your students generalize their language and literacy skills in reading across settings and situations

7. **Align Your Therapy with Evidence-Based Practice to Support Literacy Development**

Discover what research says about oral language skills that align with evidence-based techniques to build the language skills that will help your students become skilled readers

8. **Utilize the Most Effective Inclusive Practices for Implementing Language and Literacy Skills Whether You Are Working in Your Classroom or Online**

Maximize your time as an SLP by learning how to most efficiently use inclusion practices ... When and how to work in the classroom and ways to coach teachers and paraprofessionals to address your language goals throughout the school day

9. **Implement Universal Design for Learning to Support Student Success at School and Online**

Manage behavior utilizing Universal Design for Learning principles and real-life examples, such as interactive games to support students with language disorders

10. **Receive an Extensive Digital Resource Handbook and Electronic Resources**

Each participant will receive an extensive digital handbook and electronic resources that address language, reading and writing supports and strategies that you can immediately apply in-person and online

Outstanding Strategies You Can Use Immediately

What You Will Learn ...

- **Practical ways to incorporate reading and writing goals** into all aspects of your oral language therapy whether it is accomplished in-person or online
- **Advanced strategies** for addressing phonological awareness systematically and hierarchically
- How to **align your language therapy with the reading programs** your students use in the classroom and in their specialized reading interventions
- What aspects of **reading/writing break down** for children with typical communication disorders that SLPs treat every day
- **Efficient, practical methods for assessing reading comprehension and written language** in the context of your language evaluations
- **Current technology resources** that support both language skills and the development of reading and writing skills
- Specific ideas and strategies to **strengthen the core language skills** that allow your students to become good readers
- Practical therapy **techniques that align with English Language Arts state standards**
- How your unique **role as an SLP differentiates you from the literacy specialist** and why you are such a key player on the team whether you are at school or working from a distance
- Ideas for **incorporating multi-disciplinary instruction, Universal Design for Learning and Assistive Technology** in programs addressing language and literacy deficits



'Wonderful! Engaging presenter, refreshing material and new ideas I can use. Thank you!'

– ERIN PAIROLERO, SPEECH-LANGUAGE PATHOLOGIST

Practical Ideas and Strategies

As a Speech-Language Pathologist, your expertise in oral language and literacy skills makes you an invaluable member of the literacy team at your school and in your online sessions and meetings. In this seminar, **MariBeth Plankers**, an experienced Speech-Language Pathologist and Assistive Technology Professional, will share practical methods for assessing and treating reading and writing skills in students with language disorders. You will learn effective, efficient and easy-to-implement techniques to identify children who are at risk for problems with decoding, reading comprehension and written language. MariBeth will share with you evidence-based practice, from the ASHA (2016) evidence-based triangle, about the language skills that strongly predict learning deficits across settings and situations and provide strategies that will address these language skills in your daily therapy. This seminar will focus on practical strategies that can be implemented in the context of therapy, as well as generalizing across settings and situations, such as online learning and virtual classrooms.

You will leave with numerous ideas for reading, writing, language, and games to assist students with moderate to severe reading, writing and language deficits, as well as ways to maximize your effectiveness as an SLP in the school or online setting.



A Message From Seminar Leader, MariBeth Plankers



Uniquely Qualified Instructor

MARIBETH PLANKERS is an outstanding national presenter and highly experienced Speech-Language Pathologist and Assistive Technology Professional. She brings years of experience and ideas for improving outcomes for students who have language, reading and written language disorders. She has extensive experience providing literacy-based language therapy services within inclusive models and via teletherapy. In addition, she has experience working as a clinical service provider, diagnostician and clinical supervisor within the university setting. MariBeth reflects a broad experience working with students of all ages, from early education through college level, in-person and online.

She presents nationally on topics of language and literacy, assistive technology and Universal Design for Learning. MariBeth is the author of *Speech-Language Pathologists: Strategies to Support Students with Reading and Language Deficits (Grades PreK-12)*, the digital resource handbook each participant will receive.

Join MariBeth for a fast-paced, engaging seminar with practical, highly effective techniques you can use with the children you see and treat, whether you are working in a school or online environment.

Dear Colleague:

For many years, I have worked with students who have a language disorder which leads to challenges in reading and writing. Knowing my own personal passion for reading and writing, I can't imagine any skill more important to teach! When I initially started working on literacy skills with students, I was frequently asked why the SLP should have anything to do with a student's reading growth. Our educational background and expertise in language is all the more reason for the SLP to be highly involved with reading and writing. Over the years our role as SLPs has expanded, and our expertise in language and literacy is now more widely acknowledged. We are able to assist with spelling, reading fluency and most importantly, reading comprehension and writing language whether your therapy sessions are delivered in-person or online.

It is imperative that we demonstrate a practical approach to addressing literacy skills along with our oral language goals. We don't need more work, but do need to address reading in the context of our current therapy programs. Our role is to provide effective strategies to teach other specialists what we know about language and literacy.

I have developed this seminar to share with you the best practices that we, as SLPs and other specialists, can use to support students with language and literacy deficits. We will explore the alignment of oral language and literacy skills and how valuable your expertise is to the school IEP team. We will explore the different types of reading challenges that your students with language disorders encounter across the curriculum. The emphasis will be on practical, doable methods to evaluate students and to develop individualized planned programs that may be implemented through direct intervention, the general education classroom and consultation.

My goal for this seminar is to send you back to your schools and online learning communities empowered with many new ideas you can put to practice immediately! We can lower the barriers in order to raise the level of success for our students.

Sincerely,

MariBeth Plankers, M.S. CCC-SLP, ATP

P.S. I know how valuable your time is, so my focus for the day will be on sharing practical strategies that work in today's traditional or virtual schools with today's students.

"My goal for this seminar is to send you back to your schools and online learning communities empowered with many new ideas you can put to practice immediately!"

What Your Colleagues Say About MariBeth Plankers

*"MariBeth shared a wealth of amazing resources that I cannot wait to use in my sessions!
One of the best, most informative and engaging seminars that I've attended in years."*

Maria Mignone, Speech-Language Pathologist

*"Great seminar, **wonderful presenter**, fantastic information!"*

Nikki Steele, Speech-Language Pathologist

*"MariBeth has great energy and shared ideas to **expand my therapy and role with students**
and in education."*

Tess Heckel, Speech-Language Pathologist

*"MariBeth's passion for learning is obvious. I appreciate the **huge list of resources** she shared."*

Craig Begalle, Speech-Language Pathologist



About BER Live Online Seminars

With the current health challenges, all BER in-person PD events are currently being presented in a Live Online format:

Outstanding Instructors

All programs are led by outstanding BER national trainers

Extensive Resource Handbooks

You'll have access to an extensive digital Resource Handbook before, during and after your seminar

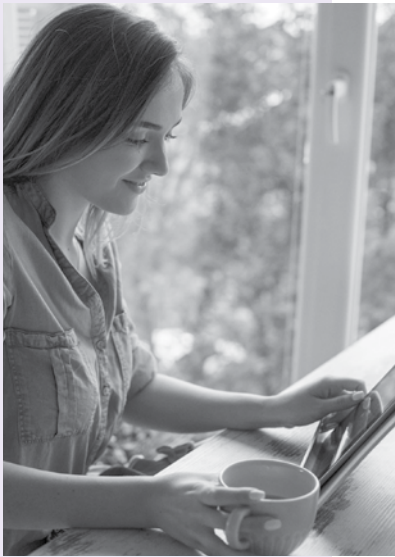
Highly Interactive

You'll be able to ask questions in real time and interact with the instructor and other participants

Program Guarantee

As we have for 43 years, we guarantee the high quality of our programs. If you are not satisfied, we'll give you a 100% refund.

Special Benefits of Attending



'MariBeth is an exceptional presenter who shares information with enthusiasm and from the heart.'

– JODY ARBTER,
SPEECH-LANGUAGE
PATHOLOGIST

On-Site Training

Most BER seminars can be brought to your school or district in-person or online. See the options at www.ber.org/onsite or call 877-857-8964 to speak to one of our On-Site Training Consultants.

Extensive Digital Resource Handbook

Each participant will receive an extensive digital resource handbook giving you access to countless strategies before, during and after the seminar. The handbook includes:

- Comprehensive descriptions of all the skills and strategies addressed throughout the seminar for your use at school or online
- A review of research in reading and written language, including an extensive reference list

ASHA CEUs Available



The **Bureau of Education & Research** is approved by the Continuing Education Board of the American Speech-Language-Hearing Association (ASHA) to provide continuing education activities in speech-language pathology and audiology. **See course information for number of ASHA CEUs, instructional level and content area.** ASHA CE Provider approval does not imply endorsement of course content, specific products, or clinical procedures.

This course is offered for **0.50 ASHA CEUs (Intermediate level, Professional area).**

ASHA-Required Disclosure Statement for MariBeth Plankers:

Financial: Consultant for the Bureau of Education & Research and receives honorarium compensation.

Nonfinancial: No relevant nonfinancial relationships exist.

Please bring your ASHA Account Number to the seminar if you will be completing paperwork for the ASHA CE Registry.

Meet Inservice Requirements / Earn State CEUs

Participants of both the Live Online Seminar and those completing the Recorded Version online can receive a certificate of participation that may be used to verify five continuing education hours. In addition, state CEUs are available for both versions of the course. For details, visit www.ber.org/ceus

Earn One to Four Graduate Semester Credits

Up to four graduate level professional development credits are available with an additional fee and completion of follow-up practicum activities. Details for direct enrollment with Brandman University, part of the Chapman University system, will be available at this program.

Can't Attend?

Other Professional Development Options:



Recorded Version of the Seminar

This course will be video recorded and available to take online at your convenience. You'll have access to the entire course and to the extensive digital resource handbook. Optional CEUs and graduate credit available. To enroll, see registration form on page 7.



Related On-Demand Online Courses

Two related On Demand Video-Based Online Learning courses, *Timesaving Strategies to Integrate Your SLP Interventions into Classrooms: Moving from a Caseload to a Workload Approach*, for Grades P-12, and *SLPs: Enhance Therapy Effectiveness for Auditory Processing Disorder, Memory Deficits, Attention Deficit Disorder, and Language Processing*, are available for immediate registration.

To enroll, visit www.ber.org/online

Speech-Language Pathologists: Strategies to Support Students with Reading and Language Deficits (Grades PreK-12)

Registration (XSQ1W1)

- 1. February 9, 2021** (Start time: 9 AM Eastern)
- 2. February 10, 2021** (Start time: 9 AM Central)
- 3. February 11, 2021** (Start time: 9 AM Pacific)
- or —
- 4. I'd like to order the recorded version of this seminar**

FIRST NAME _____	M.I. _____	LAST NAME _____
POSITION, SUBJECT TAUGHT _____		
GRADE LEVEL _____		
SEMINAR NUMBER: _____ (Please see list above)		

List additional registrants on a copy of this form

SCHOOL NAME _____	
SCHOOL MAILING ADDRESS _____	
CITY & STATE _____ ZIP CODE _____	
SCHOOL PHONE NUMBER _____	HOME PHONE NUMBER _____
()	()

Registration confirmations and login details are sent via e-mail

E-MAIL ADDRESS (<u>REQUIRED</u> FOR EACH REGISTRANT) _____	
HOME MAILING ADDRESS _____	
CITY & STATE _____ ZIP CODE _____	

IMPORTANT – PRIORITY ID CODE: EXSQ1W1

METHOD OF PAYMENT – Team Discount Available

The registration fee is \$279 per person,
for teams of three or more registering at the same time, the fee is \$259
per person. **Payment is due prior to the program.** No cash please.

A check (payable to **Bureau of Education & Research**) is attached

A purchase order is attached, P.O. # _____
(Be sure to include priority ID code on the P.O.)

Charge my: MasterCard VISA Discover

Account # _____ Exp. Date: _____
MO/YR


Billing Zip Code: _____ 3 Digit CVV Code: _____
(Found on back of card)

/


Please print name as it appears on card Signature (required for credit card purchases)

FOUR EASY WAYS TO REGISTER:

 **REGISTER ONLINE** at: www.ber.org

 **FAX this form to: 1-425-453-1134**

 **PHONE toll-free: 1-800-735-3503**
(Weekdays 5:30 am - 4 pm Pacific Time)

 **MAIL this form to: Bureau of Education & Research**
915 118th Avenue SE • PO Box 96068
Bellevue, WA 98009-9668

Program Hours

- All Live Online seminars start times are described on the cover
- Check-in 15 minutes prior to the seminar
- Live Online seminars are five hours in length plus breaks
- Registrants will receive login information by email four days before their Live Online seminar

Fee

The registration fee is \$279 per person, \$259 per person for groups of three or more registering at the same time. Call us at 1-800-735-3503 for groups of ten or more. **Payment is due prior to the program.** Fee includes seminar registration, a certificate of participation and an extensive digital resource handbook. The fee is the same for Live Online Seminars or Recorded Seminars.

Cancellation/Substitutions:

100% of your paid registration fee will be refunded if you can't attend and notify us at least 10 days before the seminar. Late cancellations made prior to the event date will be refunded less a \$15 service fee. Substitutions may be made at any time without charge.

Program Guarantee

We stand behind the high quality of our programs by providing the following unconditional guarantee: If you are not satisfied with this program, we'll give you a 100% refund of your registration fee.

Further Questions

Call the Bureau of Education & Research (800) 735-3503 or visit us online at www.ber.org. The Bureau is North America's leading presenter of PD training for professional educators. Programs are based on sound research, are highly practical in content and consistently receive excellent evaluations.



XSQ1W1

© 2020 Bureau of Education & Research. All rights reserved.



BUREAU OF EDUCATION & RESEARCH

915 118th Avenue SE
PO Box 96068
Bellevue, WA 98009-9668
www.ber.org

Prsrt Std
U.S. Postage
PAID
Bureau of
Education &
Research

Speech-Language Pathologists: Strategies to Support Students with Reading and Language Deficits (Grades PreK-12)



SPEECH-LANGUAGE PATHOLOGISTS: Address Reading and Language Deficits (Grades PreK-12)

Practical PD, No Travel

An outstanding one-day Live Online Seminar

Includes an extensive Resource Handbook

Can't Attend? A Recorded Version is available
to use online at your convenience

XSQ1W1

Speech-Language Pathologists: Strategies to Support Students with Reading and Language Deficits (Grades PreK-12)



Bureau of Education & Research

Live Online Seminar
or Recorded Version



A Unique One-Day Live Online Seminar
(Also available as a Recorded Online Version
to Use at Your Convenience)

Presented by

Maribeth Plankers, M.S. CCC-SLP, ATP
Outstanding Speech-Language Pathologist
and National Presenter

Learn evidence-based strategies to support reading, language and written skills for students with significant language-literacy disorders, dyslexia and language deficits

Gain insight into accessible education materials that will support your students across settings and situations, whether in the classroom or online, for reading, vocabulary and written language needs

Explore how intervention can be planned to incorporate literacy strategies into special and general education settings