

# **DYSLEXIA: Best Targeted Interventions to Accelerate Learning (Grades 6-12)**



A Unique One-Day Live Online Seminar Presented by

**Shelley Yeater**

Outstanding Teacher and National Presenter

**Specifically Designed for Educators Serving Students in Grades 6-12:  
Classroom Teachers, Reading Specialists, Literacy Coaches,  
Title I Staff, Special Education Staff, Instructional Assistants,  
Interventionists, and Administrators**

---

**Powerful instructional strategies to boost reading, writing and spelling** achievement of students who have or may have dyslexia whether you're working with students in-person or online

---

**Best, most current information** on dyslexia and practical implications and suggestions for your spelling, reading and writing instruction ... support your students in and out of their content classes

---

**The most current research** on the symptoms of dyslexia including proven applications for assessment and instruction

---

**Research-based classroom and intervention strategies** for students in grades 6-12 who have or may have dyslexia

## **Live Online Seminars**

### **November 23**

**9 AM Central**, 10 AM Eastern,  
8 AM Mountain, 7 AM Pacific

### **November 24**

**9 AM Pacific**, 12 PM Eastern,  
11 AM Central, 10 AM Mountain

### **December 16**

**9 AM Eastern**, 8 AM Central,  
7 AM Mountain, 6 AM Pacific

### **December 17**

**9 AM Mountain**, 11 AM Eastern,  
10 AM Central, 8 AM Pacific

---

### **CAN'T ATTEND?**

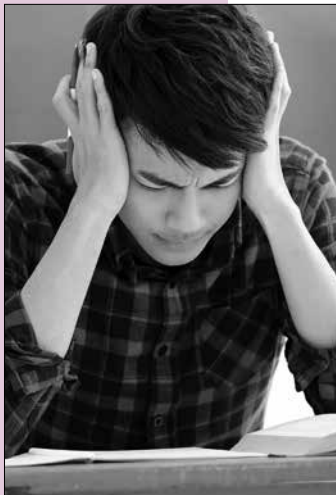
Order the recorded version and take the seminar online at your convenience (see page 6)

---

CEUs and Graduate Credit Available  
See page 6 for details

# Ten Key Benefits of Attending

*'She presents information in a clear, understandable way.'*



## Who Should Attend

Educators Serving Students in Grades 6-12: Classroom Teachers, Reading Specialists, Literacy Coaches, Title I Staff, Special Education Staff, Instructional Assistants, Interventionists, and Administrators

- 1. Optimize Literacy Instruction for Students Who Have or May Have Dyslexia**  
Learn dozens of strategies and activities that dramatically increase the quality of instruction in-person or online ... Help your students in grades 6-12 who have or may have dyslexia achieve greater success in reading, writing and spelling in all of their classes
- 2. Strengthen Brain Pathways to Help Students with Dyslexia Succeed**  
Understand how reading develops in both the typical reader's brain and the dyslexic reader's brain and learn practical techniques to improve key brain pathways
- 3. Address and Prevent Low Word Recognition**  
Gain research-based instructional techniques that help students with reading impairments to better learn word patterns and word recognition online and in-person ... Learn what you can do to address and help prevent low word recognition
- 4. Foster and Support Strong Fluency Growth**  
Discover instructional techniques, materials and activities that help students who struggle with decoding to make more rapid progress in word recognition and fluency
- 5. Help Students Who Have Fallen Behind to Close the Gap**  
Teach your students helpful strategies they can independently use to overcome their own learning roadblocks ... Accelerate the progress of students with dyslexia with these powerful teaching tools
- 6. Help Students with Dyslexia Avoid Reading Difficulty using Explicit, Multisensory Teaching Techniques**  
Learn direct and explicit multisensory teaching techniques you can use immediately to help students in grades 6-12 with dyslexia
- 7. Design Effective Accommodations to Focus on the Most Successful Strategies for Dyslexia**  
Save precious teaching time by learning what to focus on for your students with dyslexia ... Learn the most effective strategies for developing accommodations that increase student success and engagement
- 8. Understand the Signs and Symptoms of Dyslexia in the Classroom**  
Analyze the symptoms of dyslexia and educational areas to assess to identify students in grades 6-12 with dyslexia
- 9. Discover the Most Effective Accommodations, Scaffolds and Supports for Students with Dyslexia**  
Learn about low-tech and high-tech accommodations, scaffolds, and supports to help students with dyslexia access grade-level standards
- 10. Receive a Comprehensive Digital Dyslexia Resource Handbook**  
Return to your school with an extensive digital resource handbook filled with ideas, strategies and step-by-step instructions designed to help you support the reading, writing and spelling success of students in grades 6-12 who have or may have dyslexia ... How to use these strategies whether you are working in-person or online

# Outstanding Strategies You Can Use Immediately

## What You Will Learn ...

- **What dyslexia is** and what it isn't
- How to **strengthen students' ability to read** materials online or in-person
- **Dozens of strategies** to help students who have or may have dyslexia successfully read, write and spell
- **Activities and strategies that strengthen the processing system** a brain area that is often weak in grades 6-12 students with dyslexia
- Proven ways to **help your students with dyslexia** access their learning whether they are learning online or in-person
- **Discover online tools** to support students with reading, writing and spelling
- **Tips and ideas for adjusting your instruction** so that it better supports grades 6-12 students with dyslexia and reading impairments
- **Classroom proven strategies** and the latest information for strengthening the brain pathways critical to reading, writing and spelling success ... Implications for our work with students with dyslexia and other reading challenges
- **Instructional techniques that help all students learn**, but are especially supportive for students with dyslexia and reading impairments
- **Outstanding research-based teaching techniques** and online tools for reinforcing and strengthening your students' reading, writing and spelling proficiency in grades 6-12



*"I loved this seminar! Shelley is very knowledgeable and understands students who cannot read."*

## Practical Ideas and Strategies

Do you have students struggling to read and comprehend the basic vocabulary necessary for learning in grades 6-12? Are you searching for ways to help students who have or may have dyslexia to be more successful readers, writers and spellers? In this **NEW** seminar, **SHELLEY YEATER** will share with you powerful instructional techniques, technology tools, research-based strategies and many classroom activities all designed to support the success of students who have or may have dyslexia whether they are learning in-person or online. Shelley will share best practices using both traditional resources and cutting-edge online tools for strengthening the literacy skills of students with dyslexia. Gain a wealth of practical strategies for boosting reading, writing and spelling achievement and increasing students' confidence. Drawing on cutting-edge brain research, Shelley will explore how and why dyslexia develops, what it looks like in a secondary student, and present a wealth of practical strategies, techniques and activities you can use to help activate and strengthen your students' academic success. Enhance your instruction and help your students who have or may have dyslexia increase their engagement and experience success in reading, writing and spelling. Are you looking for the most effective ways to better help your students who may have dyslexia to be more successful readers and spellers? Then this seminar is for you. **You'll leave the seminar with numerous evidence-based interventions you can use immediately that target your dyslexic students' specific needs so your students who have or may have dyslexia can experience greater literacy success.**



# A Message From Seminar Leader, Shelley Yeater



## Uniquely Qualified Instructor

**SHELLEY YEATER** is an outstanding educator and national presenter. An experienced dyslexia specialist and reading specialist, she has worked extensively with students diagnosed with dyslexia or thought to be dyslexic. As a reading consultant and instructional coach, Shelley understands the realities and challenges that teachers face as they strive to help children with reading impairments. She is passionate about helping struggling learners and students with disabilities reach high levels of learning, as well as equipping their teachers with cutting-edge, highly effective tools to increase success and confidence in secondary students. Shelley was responsible for designing and teaching classes on reading disabilities and remediation. She also maintains a private practice working directly with students with dyslexia. It is her greatest joy to watch as a struggling, discouraged reader becomes more successful and confident. **You will leave this seminar inspired by Shelley's passion, encouraged by her ideas, and filled with a wealth of new strategies to help all your students gain the skills they need to become successful readers.**

Dear Colleague:

Helping students who struggle can seem daunting on the best of days. Add to it distance learning and the challenge has just increased more than we can explain. Fortunately, research clearly shows us how reading works in the brain, why some children develop reading impairments and dyslexia, and most importantly, what we can do to support and accelerate the learning of our grades 6-12 students who have or may have dyslexia whether we are teaching from home or from our classrooms.

I have designed this dynamic day to equip you with practical tips and ideas that focus on learning strategies and classroom activities that you can use in your classroom as well as to support students when they are in their content area classes. All the knowledge, strategies, activities, and free technology tools you gather in this seminar will help you teach and empower students with dyslexia to be more successful readers, writers, and spellers whether you are working in-person or virtually. And because I know firsthand that teachers are some of the busiest people in the world, everything I present is practical and time-efficient. I'll share with you proven approaches to tackling your most difficult instructional concerns about your dyslexic students; approaches that will benefit not only your students with dyslexia but all students.

Working with students with dyslexia and their teachers has been my passion and the focus of my career. Every day you help dozens of students achieve success. I look forward to sharing with you what I've learned about the teaching of reading so all your students, including those with dyslexia, can be even more successful. I look forward to sharing a day of learning with you.

Sincerely,

*Shelley Yeater*

Shelley Yeater

**P.S.** The job you do is so very important. Investing a day with me will give you the **knowledge, strategies, and activities that can make a real difference** in the reading, writing, and spelling lives of your students with dyslexia as they navigate learning in-person or virtually.

*'I'll share with you proven approaches to tackling your most difficult instructional concerns about your dyslexic students; approaches that will benefit not only your students with dyslexia but all students.'*

# What Your Colleagues Say About Shelley Yeater

---

*"I've never had such a **wealth of information presented in such a clear, user-friendly manner.** Shelley has re-energized my work with struggling students."*

---

*"**Shelley's seminar is amazing!** She presents in a manner that is easily understood. Her knowledge on dyslexia is very extensive. I will definitely use her ideas with my students."*

---

*"Shelley's seminar is spot-on! She has the uncanny ability to connect **cutting-edge theory with practical application that I can actually use!**"*



## About BER Live Online Seminars

**With the current health challenges, all BER in-person PD events are currently being presented in a Live Online format:**

**Outstanding Instructors**

All programs are led by outstanding BER national trainers

**Extensive Resource Handbooks**

You'll have access to an extensive digital Resource Handbook before, during and after your seminar

**Highly Interactive**

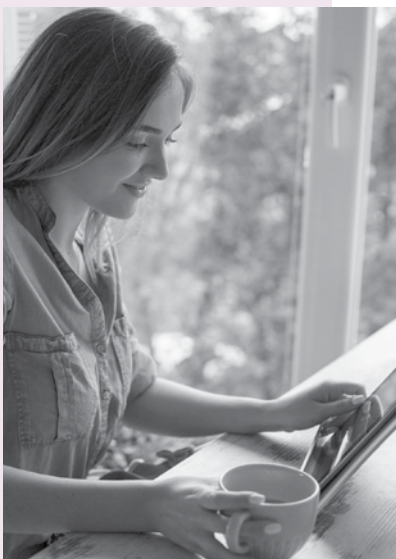
You'll be able to ask questions in real time and interact with the instructor and other participants

**Program Guarantee**

As we have for 43 years, we guarantee the high quality of our programs. If you are not satisfied, we'll give you a 100% refund.



# Special Benefits of Attending



'Shelley has a great sense of humor. I appreciate her real-life examples.'

## On-Site Training

Most BER seminars can be brought to your school or district in-person or online. See the options at [www.ber.org/onsite](http://www.ber.org/onsite) or call 877-857-8964 to speak to one of our On-Site Training Consultants.

## Extensive Digital Resource Handbook

Each participant will receive an extensive digital resource handbook giving you access to countless strategies before, during and after the seminar. The handbook includes:

- Practical, research-based teaching techniques and classroom activities for supporting students in grades 6-12 who have or may have dyslexia
- Strategies that help build important pathways in the brain, needed for literacy success whether accessing learning in-person or online
- Effective ways to positively impact achievement for students who struggle with dyslexia
- Important information on what dyslexia is and what it isn't
- How to implement these strategies whether you are working in-person or online

## Consultation Available

Shelley Yeater will be available to answer your specific questions and the unique needs of your own program.

## Meet Inservice Requirements / Earn State CEUs

Participants of both the Live Online Seminar and those completing the Recorded Version online can receive a certificate of participation that may be used to verify five continuing education hours. In addition, state CEUs are available for both versions of the course. For details, visit [www.ber.org/ceus](http://www.ber.org/ceus)

## Earn One to Four Graduate Semester Credits



Up to four graduate level professional development credits are available with an additional fee and completion of follow-up practicum activities. Details for direct enrollment with Brandman University, part of the Chapman University system, will be available at this program.

## Can't Attend?

### Other Professional Development Options:



#### Recorded Version of the Seminar

This course will be video recorded and available to take online at your convenience. You'll have access to the entire course and to the extensive digital resource handbook. Optional CEUs and graduate credit available.

To enroll, see registration form on page 7.



#### Related On-Demand Online Courses

Related On Demand Video-Based Online Learning courses, *Strategies! Strategies! Significantly Increase Students' Writing Skills, for Grades 6-12, Strengthening Your Students' Writing Skills by Teaching Smarter, Not Harder*, for Grades 6-12, and other writing-related courses are available for immediate registration. To enroll, visit [www.ber.org/online](http://www.ber.org/online)

# DYSLEXIA:

## Best Targeted Interventions to Accelerate Learning (Grades 6-12)

### Registration (HDR1F1)

1. **November 23, 2020** (Start time: 9 AM Central)
2. **November 24, 2020** (Start time: 9 AM Pacific)
3. **December 16, 2020** (Start time: 9 AM Eastern)
4. **December 17, 2020** (Start time: 9 AM Mountain)
- or —
5. **I'd like to order the recorded version of this seminar**

FIRST NAME	M.I.	LAST NAME
<hr/>		
POSITION, SUBJECT TAUGHT	GRADE LEVEL	
<hr/>		
SEMINAR NUMBER: _____ (Please see list above)		

*List additional registrants on a copy of this form*

SCHOOL NAME

---

SCHOOL MAILING ADDRESS

---

CITY & STATE ZIP CODE

---

SCHOOL PHONE NUMBER HOME PHONE NUMBER

(     ) (     )

**Registration confirmations and login details are sent via e-mail**

E-MAIL ADDRESS (REQUIRED FOR EACH REGISTRANT)

---

HOME MAILING ADDRESS

---

CITY & STATE ZIP CODE

---

**IMPORTANT: PRIORITY ID CODE: EHDR1F1**

### METHOD OF PAYMENT – Team Discount Available

**The registration fee is \$279 per person,**  
for teams of three or more registering at the same time, the fee is \$259  
per person. **Payment is due prior to the program.** No cash please.

- A check (payable to **Bureau of Education & Research**) is attached
- A purchase order is attached, P.O. # \_\_\_\_\_  
(Be sure to include priority ID code on the P.O.)
- Charge my:     MasterCard     VISA     Discover
- Account # \_\_\_\_\_ Exp. Date: \_\_\_\_\_  
MO/YR
- Billing Zip Code: \_\_\_\_\_ 3 Digit CVV Code: \_\_\_\_\_  
(Found on back of card)
- \_\_\_\_\_  
Please print name as it appears on card                      Signature (required for credit card purchases)

### FOUR EASY WAYS TO REGISTER:

**REGISTER ONLINE** at: [www.ber.org](http://www.ber.org)

**FAX this form to: 1-425-453-1134**

**PHONE toll-free: 1-800-735-3503**  
(Weekdays 5:30 am - 4 pm Pacific Time)

**MAIL this form to: Bureau of Education & Research**  
915 118th Avenue SE • PO Box 96068  
Bellevue, WA 98009-9668

### Program Hours

- All Live Online seminars start times are described on the cover
- Check-in 15 minutes prior to the seminar
- Live Online seminars are five hours in length plus breaks
- Registrants will receive login information by email four days before their Live Online seminar

### Fee

The registration fee is \$279 per person, \$259 per person for groups of three or more registering at the same time. Call us at 1-800-735-3503 for groups of ten or more. **Payment is due prior to the program.** Fee includes seminar registration, a certificate of participation and an extensive digital resource handbook. The fee is the same for Live Online Seminars or Recorded Seminars.

### Cancellation/Substitutions:

100% of your paid registration fee will be refunded if you can't attend and notify us at least 10 days before the seminar. Late cancellations made prior to the event date will be refunded less a \$15 service fee. Substitutions may be made at any time without charge.

### Program Guarantee

We stand behind the high quality of our programs by providing the following unconditional guarantee: If you are not satisfied with this program, we'll give you a 100% refund of your registration fee.

### Further Questions

Call the Bureau of Education & Research (800) 735-3503 or visit us online at [www.ber.org](http://www.ber.org). The Bureau is North America's leading presenter of PD training for professional educators. Programs are based on sound research, are highly practical in content and consistently receive excellent evaluations.



HDR1F1

© 2020 Bureau of Education & Research. All rights reserved.



BUREAU OF EDUCATION & RESEARCH

915 118th Avenue SE  
PO Box 96068  
Bellevue, WA 98009-9668  
[www.ber.org](http://www.ber.org)

Prsrt Std  
U.S. Postage  
**PAID**  
Bureau of  
Education &  
Research

# DYSLEXIA: Best Targeted Interventions to Accelerate Learning (Grades 6-12)



An outstanding one-day Live Online Seminar

Includes an extensive Resource Handbook

Can't Attend? A Recorded Version is available  
to use online at your convenience

HDR1F1

# DYSLEXIA: Targeted Interventions to Accelerate Learning (Grades 6-12)

## Practical PD, No Travel

# DYSLEXIA: Best Targeted Interventions to Accelerate Learning (Grades 6-12)

**BER**  
Bureau of Education & Research

Live Online Seminar  
or Recorded Version



A Unique One-Day Live Online Seminar  
(Also available as a Recorded Online Version  
to Use at Your Convenience)

Presented by

## Shelley Yeater

Outstanding Teacher and National Presenter

**Powerful instructional strategies to boost reading, writing and spelling** achievement of students who have or may have dyslexia whether you're working with students in-person or online

**Best, most current information** on dyslexia and practical implications and suggestions for your spelling, reading and writing instruction ... support your students in and out of their content classes

**The most current research** on the symptoms of dyslexia including proven applications for assessment and instruction

**Research-based classroom and intervention strategies** for students in grades 6-12 who have or may have dyslexia