

**TWO-DAY INTENSIVE TITLE I LEADERSHIP INSTITUTE**

# **STRENGTHENING YOUR TITLE I PROGRAM: Powerful Intervention Strategies to Accelerate Achievement for Struggling Students (Grades K-6)**



Two-Day In-Person Institute Presented by  
**KELLY HARMON**

*Outstanding Title I Coordinator and National Presenter*

**Specifically Designed for K-6 District and School Leaders, Leadership Teams, District Curriculum Coordinators, Title I Directors, Principals, Literacy and Math Coaches, Reading Specialists and Classroom Teachers on School or District Teams or Committees**

- ▶ Learn the **key components of the most exemplary Title I programs** that accelerate the success of struggling learners and how you can incorporate these components into your existing Title I program
- ▶ Organize your Title I program based on the tenets of best practices and examine the structures that work best to **increase student achievement**
- ▶ **Develop expertise in working with at-risk students** to close the achievement gap and make more than adequate yearly progress
- ▶ Acquire dozens of **instantly usable strategies, innovative tips and techniques** you can use and share with your school and district Title I teams

## **Massachusetts**

**Boston (Wakefield) – January 27-28**

## **Missouri**

**Kansas City – January 10-11**  
(Independence)

**St. Louis (Clayton) – January 12-13**

CEUs and Graduate Credit Available  
See page 6 for details

### **CAN'T ATTEND?**

Order the recorded version and take the course online at your convenience (see page 6)

“*Loved the two days of great resources and practical information. Kelly is a great presenter and very knowledgeable!*”

– KAREN BAKER, TITLE I READING SPECIALIST

## Practical Ideas and Strategies

Learn how to better lead your school or district Title I team in this strategy-packed, two-day institute led by nationally acclaimed presenter, **Kelly Harmon**. You will discover how to work with teachers to identify and implement the most effective, cutting-edge, research-based instructional strategies to increase school and district-wide student achievement. You will learn how to develop teacher expertise in working with struggling students along with ways to continually monitor and adjust instruction based on student results. This is a unique opportunity to evaluate your own Title I program in light of current research that identifies the most effective instructional practices, and gain an in-depth look at the key components of highly successful Title I programs and how these can be applied to your own Title I school or district model. Take an intensive look at what works for struggling learners and how you can adapt it to meet the needs in your school or district. You will walk away with dozens of practical strategies and an extensive resource handbook to help you lead and teach your teachers.

**Join Kelly and your colleagues for two, fast-paced days packed with the best research-based strategies to increase reading and math achievement for your at-risk students.**

## A Practical, Two-Day Institute Focused on Increasing Achievement for Your Struggling Students in Title I Programs



Plan to attend as a school or district team, a representative team member or district leader to increase the effectiveness of your Title I program. You will learn how to build on the success of your current program, identify the key components that have the greatest impact on student achievement and find the specific areas you need to target for implementation and improvement. Leave equipped with a wealth of the most effective Title I instructional strategies that will help accelerate your at-risk students' achievement in grades K-6.

Plan to attend as a school or district team, a representative team member or district leader to increase the effectiveness of your Title I program. You will learn how to build on the success of your current program, identify the key components that have the greatest impact on student achievement

## Develop a Plan to Structure Your Title I Program for Greater Results and to Boost Teacher Expertise

Discover the attributes of highly successful Title I programs and how you can use these in your own program, including building teacher instructional expertise in working with struggling students. Gain dozens of practical, instructional strategies you can use immediately with your students in reading and math. During the two days, you will learn how to better collect and interpret specific data about your current Title I program and how to make specific adjustments that will lead to improved student achievement. To enhance your application to your own Title I program, please bring your own assessment data from one or more specific classrooms, school or district.



## Two-Day Intensive Title I Leadership Institute

### *Here's what you will learn:*

- **Key components of exemplary Title I programs** that accelerate student learning ... Implications for your own school or district program
- Develop a repertoire of **intervention strategies your Title I teachers can use** with students
- Effectively **track and document student progress** toward mastery of your grade-level state standards
- Practical intervention ideas to **increase fluency in reading and math** computation
- Strategies for **empowering struggling students to take ownership** of their learning
- Specific strategies for **teaching students living in poverty**
- **Proven strategies to scaffold thinking** and plan lessons that build on students' prior knowledge and skills
- **Techniques for grouping Title I students** by specific instructional needs for guided reading and math instruction
- **Formal and informal assessments** to quickly determine what's important to teach next to ensure acceleration of reading achievement
- **Discover how the brain learns** and how fluency is developed
- **Strategies for recording and representing new knowledge** including academic notebooks, graphic organizers and note-making tools
- Strategies for **developing academic vocabulary**
- **Minute-by-minute monitoring to increase achievement** – make learning adjustments on the spot
- Understand **why students struggle and what you can do** about it
- Discover **simple, interactive activities** to target specific comprehension skills
- **Use focus lessons and thinking strategies** to teach new content, deepen understanding and practice skills
- Create **rigorous, student-centered tasks** that allow students to utilize their knowledge and skills across the curriculum

“*Eye opening! This institute has made me evaluate our schoolwide Title I program and what I do in my own classroom. I will be making changes to help us be more effective instructors.*”

– STACEY WESTLING, TEACHER



**To Register,  
Call Toll-Free**

**1-800-735-3503**

## A Message From Your Institute Leader, Kelly Harmon



### Bureau of Education & Research

915 118th Avenue SE • PO Box 96068 • Bellevue, WA 98009-9668  
Phone (800) 735-3503 • Fax (425) 453-1134 • [www.ber.org](http://www.ber.org)

Dear Colleague:

Teaching struggling, at-risk students can be the most rewarding, yet challenging endeavor an educator can undertake. As a teacher of many struggling students, I have seen children flounder due to misconceptions about the specific instruction the child actually needs to increase understanding and learning. The most important ingredient is a teacher who has the expertise to determine what the student already knows and how to build on that knowledge. In addition, an effective, efficient set-up of a Title I program can make reaching the goals for at-risk students much more attainable. Join your colleagues for two days dedicated to building teacher expertise and planning for a successful Title I program in your school or district.

During the two days, I will share with you many proven and research-based strategies that accelerate the reading and math achievement of at-risk students. You'll experience hands-on strategies to increase teacher expertise and build on your current Title I model. Grouping, assessing, choosing high-impact materials and technology, developing thinking skills, and motivating students are just some of the topics I will address.

I extend to you a personal invitation with a pledge from me that you'll leave this two-day institute with dozens of practical strategies for accelerating your Title I students' achievement and for building and enhancing your entire Title I program. You'll also leave with the extensive resource handbook I wrote specifically for this two-day program to help you work with your students, teachers and teams to increase the achievement of your struggling learners.

Sincerely,

Kelly Harmon

**P.S. You will learn dozens of specific instructional strategies you can use to greatly increase the success of your grades K-6 students.**

*“Grouping, assessment, choosing high-impact materials and technology, developing thinking skills, and motivating students are just some of the topics I will address.”*

## What Your Colleagues Say About Kelly Harmon

**“Fast paced! Highly engaging!** Kelly is excellent and knowledgeable. I gained strategies I can implement tomorrow!”

– Michelle DeBoard, Instructional Coach

**“Absolutely fantastic!** Kelly is a great speaker and teacher. She is very engaging, helpful and resourceful!”

– Alex Erstad, 6th Grade Teacher

**“Thank you so much for all the wonderful ideas and tips!** This will really help improve our current Title I program!”

– Lori Wooden, Reading Specialist

**“This is exactly what I needed** to strengthen our Title I program! I have new ways to organize, plan, group students, as well as new strategies to use with the students I see for intervention.”

– Valerie Marshall, Reading Specialist

**“A wealth of information** was given to best fit our ever-changing, innovative Title I program. Thank you!”

– Val Maloney, Title I Coordinator

### About BER Institutes

#### Outstanding Instructors

All programs are led by outstanding, top-rated BER national trainers

#### Extensive Resource Handbook

You'll receive an extensive digital Resource Handbook full of practical strategies and resources. (For in-person institutes, registrants will also receive a printed copy of the resource handbook as long as their registration is received in the BER office at least 15 calendar days before the event.)

#### Highly Interactive

You'll be able to ask questions, consult with the instructor, and share ideas with other participants.

#### Program Guarantee

As we have for 44 years, we guarantee the high quality of our programs. If you are not satisfied, we'll give you a 100% refund.

## Uniquely Qualified Instructor

**Kelly Harmon** is an enthusiastic and engaging presenter who has a wealth of real and practical Title I classroom and school experience. She has worked with dozens of at-risk schools and populations to help increase individual, class and schoolwide achievement. Her work with teachers and school teams in organizing program structures, developing teacher expertise in instruction and fine-tuning assessment practices for targeted instruction has given her national recognition as an expert in the field.

She is the author of *STRENGTHENING YOUR TITLE I PROGRAM: Powerful Intervention Strategies to Accelerate Achievement for Struggling Students (Grades K-6)*, the comprehensive resource handbook you will receive at the two-day institute. Kelly is known not only for her knowledge and skills in working with teachers, but also for her fast-paced, interactive and highly engaging seminars.

**You will gain dozens of ideas to strengthen and enhance your Title I program to close the achievement gap for your at-risk population.**



## Special Benefits of Attending



“*Kelly did a great job overviewing (yet still digging deeper) on a HUGE topic! A much needed course for those of us in the Title I trenches!*”

– LINDY SCHENK, TITLE I TEACHER

### On-Site Training

Most BER seminars can be brought to your school or district in-person or online. See the options at [www.ber.org/onsite](http://www.ber.org/onsite) or call 877-857-8964 to speak to one of our On-Site Training Consultants.

### Extensive Resource Handbook

Each participant will receive an extensive digital resource handbook giving you access to countless strategies. The handbook includes:

- Strategies for creating a learning environment for accelerating achievement
- Instructional strategies for at-risk students
- Tips for effective assessment and teaching
- Ideas for developing teacher expertise
- And much more!

**For in-person institutes, registrants will also receive a printed copy of the resource handbook as long as their registration is received in the BER office at least 15 calendar days before the event.**

### Consultation Available

Kelly Harmon will be available throughout the two-day institute for consultation regarding your questions about the unique needs of your own Title I program.

### Who Should Attend

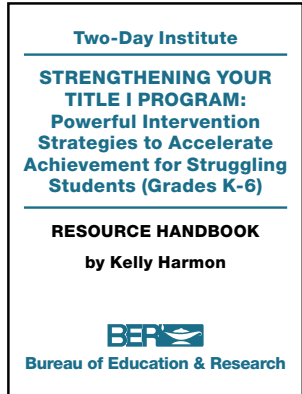
K-6 District and School Leaders and Leadership Teams, District Curriculum Coordinators, Title I Directors, Principals, Literacy and Math Coaches, Reading Specialists and Classroom Teachers on School or District Teams or Committees

### Meet Inservice Requirements / Earn State CEUs

Participants of In-Person Institutes and those completing the Recorded Version online can receive a certificate of participation that may be used to verify ten continuing education hours. For details about state CEUs available, visit [www.ber.org/ceus](http://www.ber.org/ceus)

### Earn One to Four Graduate Semester Credits

Up to four graduate level professional development credits are available with an additional fee and completion of follow-up practicum activities. Details for direct enrollment with Brandman University, part of the Chapman University system, will be available at this program.



### Can't Attend?

#### Other Professional Development Options:

#### Recorded Version of the Institute

A video recorded version of this institute will be available to take online at your convenience. You'll have access to the entire course and to the extensive digital resource handbook. Optional CEUs and graduate credit available.

To enroll, see registration form on page 7.

#### Related On-Demand Online Courses

BER offers educators a wide range of online courses that are affordable, fun, fast, and convenient. BER is now offering On Demand Video-Based courses. You may earn optional graduate-level credits for most courses. See the catalog of available courses at [www.ber.org/online](http://www.ber.org/online)

## TWO-DAY INTENSIVE TITLE I LEADERSHIP INSTITUTE

### STRENGTHENING YOUR TITLE I PROGRAM: Powerful Intervention Strategies to Accelerate Achievement for Struggling Students (Grades K-6)

#### Registration (AHH2W1)

1. **Boston** (Wakefield), **MA** – January 27-28, 2022
2. **Kansas City** (Independence), **MO** – January 10-11, 2022
3. **St. Louis** (Clayton), **MO** – January 12-13, 2022  
—or—
4. **I'd like to order the recorded version of this institute**

FIRST NAME	M.I.	LAST NAME
<hr/>		
POSITION, SUBJECT TAUGHT	GRADE LEVEL	
<hr/>		
SEMINAR LOCATION NUMBER: _____ (Please see list above)		

#### List additional registrants on a copy of this form

SCHOOL NAME	
<hr/>	
SCHOOL MAILING ADDRESS	
<hr/>	
CITY & STATE	ZIP CODE
<hr/>	<hr/>
SCHOOL PHONE NUMBER	HOME PHONE NUMBER
(     )	(     )

#### Registration confirmations and login details are sent via e-mail

E-MAIL ADDRESS ( <u>REQUIRED</u> FOR EACH REGISTRANT)	
<hr/>	
HOME MAILING ADDRESS	
<hr/>	
CITY & STATE	ZIP CODE
<hr/>	<hr/>

### IMPORTANT – PRIORITY ID CODE: EAHH2W1

#### METHOD OF PAYMENT – Group Discount Available

The registration fee is \$595 per person, for groups of three or more registering at the same time, the fee is \$545 per person. **Payment is due prior to the program.** No cash please.

- A check (payable to **Bureau of Education & Research**) is attached
- A purchase order is attached, P.O. # \_\_\_\_\_  
(Be sure to include priority ID code on the P.O.)
- Charge my:     MasterCard     VISA     Discover
- Account # \_\_\_\_\_ Exp. Date: \_\_\_\_\_  
MO/YR
- Billing Zip Code: \_\_\_\_\_ 3 Digit CVV Code: \_\_\_\_\_  
(Found on back of card)

Please print name as it appears on card

#### FIVE EASY WAYS TO REGISTER:



REGISTER ONLINE at: [www.ber.org](http://www.ber.org)



EMAIL this form to: [register@ber.org](mailto:register@ber.org)



PHONE toll-free: **1-800-735-3503**

(Weekdays 5:30 am - 5:30 pm Pacific Time)



FAX this form to: **1-425-453-1134**



MAIL this form to: **Bureau of Education & Research**

915 118th Avenue SE • PO Box 96068  
Bellevue, WA 98009-9668

#### Program Hours

All In-Person Institutes are scheduled 8:30 a.m. – 3:15 p.m.  
Check-in is 8:00 a.m. – 8:30 a.m.

#### Fee

The registration fee is \$595 per person, \$545 per person for groups of three or more registering at the same time. Call us at 1-800-735-3503 for groups of ten or more. **Payment is due prior to the program.**

Fee includes institute registration, a certificate of participation and an extensive digital resource handbook. The fee is the same for In-Person Institutes, or Recorded Institutes.

**For in-person institutes, registrants will also receive a printed copy of the resource handbook as long as their registration is received in the BER office at least 15 calendar days before the event.**

#### Meeting Sites and Hotel Accommodations

Institutes will be held at the following sites:

- Boston: Four Points by Sheraton – Wakefield, (781) 245-9300
- Kansas City: Stoney Creek Hotel – Independence, (816) 908-9600
- St. Louis: Clayton Plaza Hotel – Clayton, (314) 726-5400

If needed, please make your own hotel reservations by calling the appropriate hotel listed above.

#### Cancellations/Substitutions

100% of your paid registration fee will be refunded if you can't attend and notify us at least 10 days before the seminar. Late cancellations made prior to the event date will be refunded less a \$15 service fee. Substitutions may be made at any time without charge.

#### Further Questions

Call the Bureau of Education & Research (800) 735-3503 or visit us online at [www.ber.org](http://www.ber.org)

#### Program Guarantee

We stand behind the high quality of our programs by providing the following unconditional guarantee: If you are not satisfied with this program, we'll give you a 100% refund of your registration fee.



BUREAU OF EDUCATION & RESEARCH  
915 118th Avenue SE • PO Box 96068  
Bellevue, WA • 98009-9668 • [www.ber.org](http://www.ber.org)

Prsrt Std  
U.S. Postage  
**PAID**  
Bureau of  
Education &  
Research

## TWO-DAY TITLE I LEADERSHIP INSTITUTE Accelerate Achievement for Struggling Students (Grades K-6)

- An outstanding two-day In-Person Institute
- Includes an extensive Resource Handbook
- Can't Attend? A Recorded Version is available to use online at your convenience

AHH2W1

## TWO-DAY INTENSIVE TITLE I LEADERSHIP INSTITUTE **STRENGTHENING YOUR TITLE I PROGRAM:** Powerful Intervention Strategies to Accelerate Achievement for Struggling Students (Grades K-6)



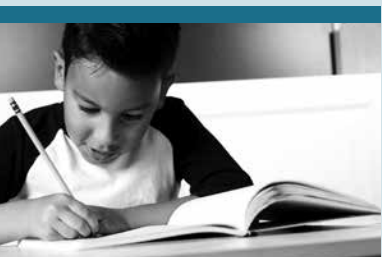
### **A Unique Two-Day Institute Coming to a Location Near You** (Also available as a Recorded Online Version to Use at Your Convenience)

Learn the **key components of the most exemplary Title I programs** that accelerate the success of struggling learners and how you can incorporate these components into your existing Title I program

Organize your Title I program based on the tenets of best practices and examine the structures that work best to **increase student achievement**

**Develop expertise in working with at-risk students** to close the achievement gap and make more than adequate yearly progress

Acquire dozens of **instantly usable strategies, innovative tips and techniques** you can use and share with your school and district Title I teams



BUREAU OF EDUCATION & RESEARCH